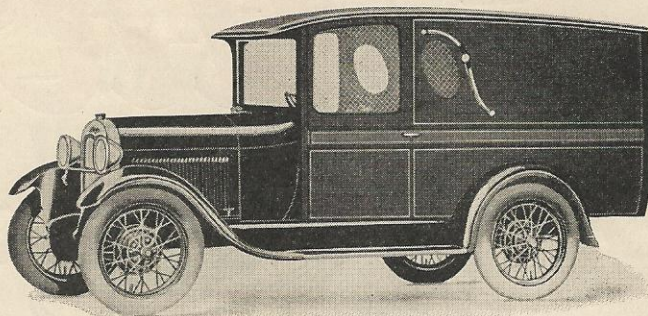


YORK—Dyers' and Cleaners' Body for Ford Model "A" and "AA" Chassis

This distinctive body is especially built for dyers and cleaners—equipped with two clothes poles and double doors in the rear. Beautiful Duco finish: Blue or Orange. The complete YORK BODY line consists of thirty distinctive models adaptable to every type of light delivery.

It will pay you to get complete information on the entire line of YORK BODIES for the New Ford Chassis. Our new illustrated catalog—finished in three colors—will help you to make sales. Write us direct or any of the following:



Model F-23. Loading space: Length 72", Width 43", Height 53", swell side. Sedan vestibule doors 24" wide.

DISTRIBUTORS

ACME SALES COMPANY,
310 Pennsylvania Ave., N. W.
Washington, D. C.
CARNegie BODY & TOP CO.,
6115 Carnegie Ave., Cleveland, Ohio.
COLLINGS CARRIAGE CO.,
Light and Lee Sts., Baltimore, Md.
COLLINGS CARRIAGE CO.,
Thorne and Copewood Sts., Camden, N. J.
COLLINGS CARRIAGE CO.,
22nd and Race Sts., Philadelphia, Pa.
ERLINDER-PLATT BODY CORP.,
4007-4031 S. Wabash Ave., Chicago, Ill.

THE HERMAN BODY COMPANY,
4420 Clayton Ave., St. Louis, Mo.
NEW ENGLAND AUTO BODY CORP.,
12 Emily St., Cor. Brookline St.
Cambridge, Mass.
PROCTOR-KEEFE COMPANY,
7741 Dix Ave., Detroit, Mich.
SMITH-MOORE VEHICLE COMPANY,
406 N. Fifth Street, Richmond, Va.
SMITH & NEIL COMPANY,
1025-35 N. Myrtle Ave., Jacksonville, Fla.

STANDARD COMMERCIAL BODY CORP.,
931 Bergen St., Brooklyn, N. Y.
STANDARD COMMERCIAL BODY CORP.,
Lincoln Highway and Jacobus Ave.,
Kearny, N. J.
STANDARD COMMERCIAL BODY CORP.,
423 E. 104th St., New York City, N. Y.
LOUIS VEGLIA,
614 N. Rampart St., New Orleans, La.
FRANK H. WEBER & COMPANY,
S. E. Cor. Floyd and Main, Louisville, Ky.

Write for Literature and Prices

YORK BODY CORPORATION - - YORK, PA.
Designers and Builders of Bettermetl—Betterwood Commercial Auto Bodies